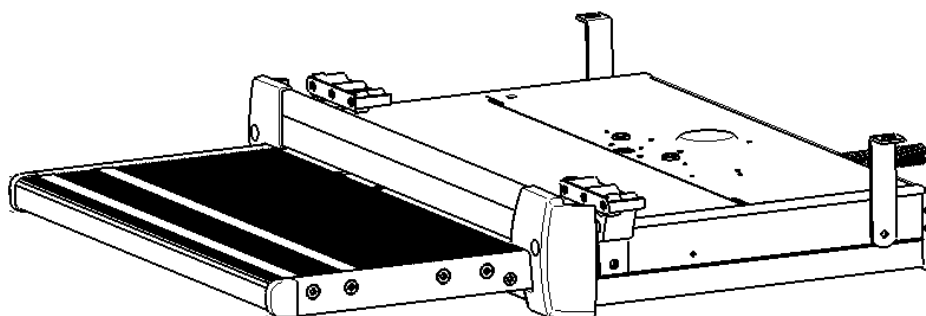


■ Installation and usage instructions for electric steps



3J-ESS-GII-

COMTENTS

INSTALLATION

SPECIFICATION ----- 3

CONTENT&TOOLS----- 4

INSPECT----- 5

STEP INSTALLATION ----- 7

ELECTRICAL INSTALLATION ----- 17

USAGR

OPEN&CLOSE -----22

MAINTENANCE -----23

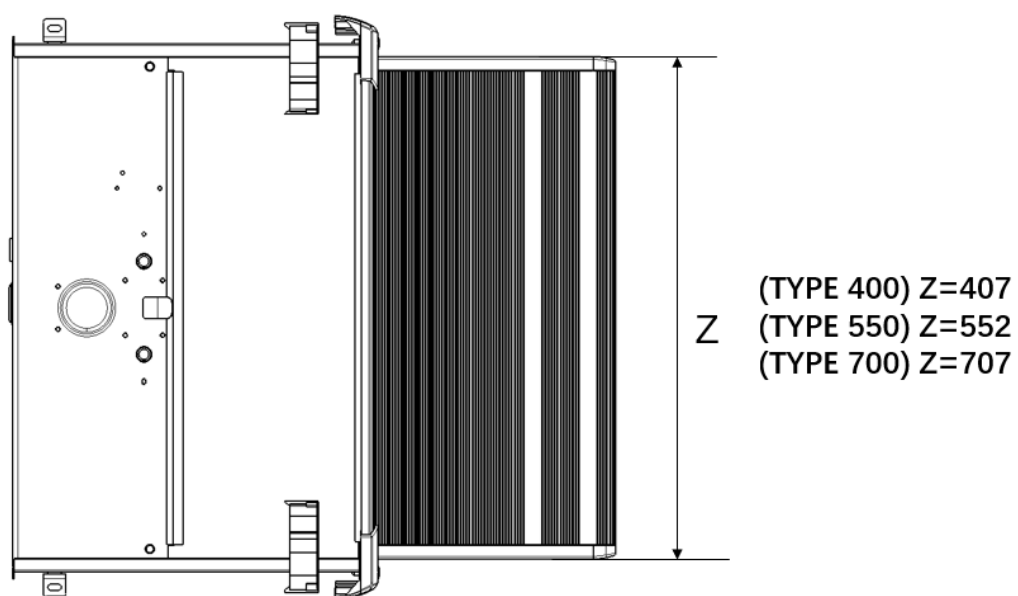
MANUAL MODE ----- 19

OTHER

WARRANTY CARD-----32

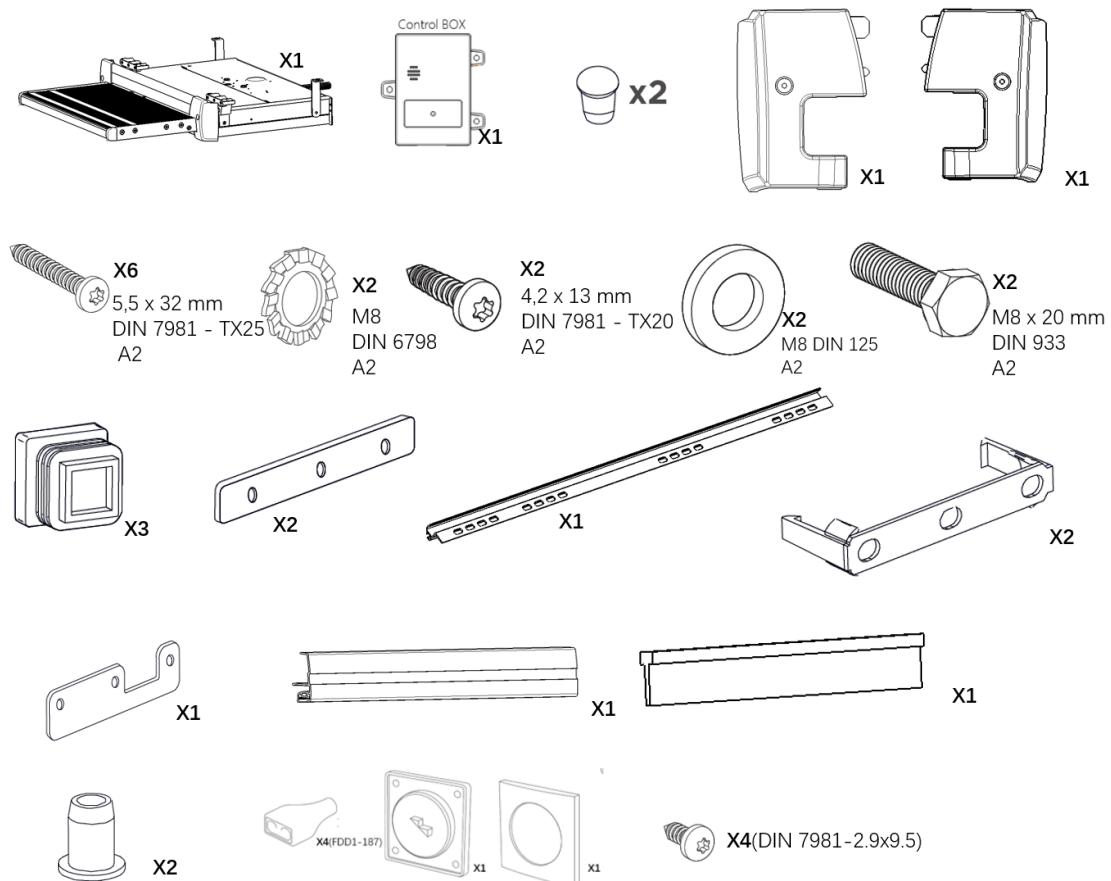
SPECIFICATION

MODLE	SPECIFICATION (mm)	PRODUCT SIZE(mm)	NET WEIGHT (kg)
3J-ESS-B	400	490*445*111	6.5
3J-ESS-B	550	635*445*111	7
3J-ESS-B	700	790*445*111	9

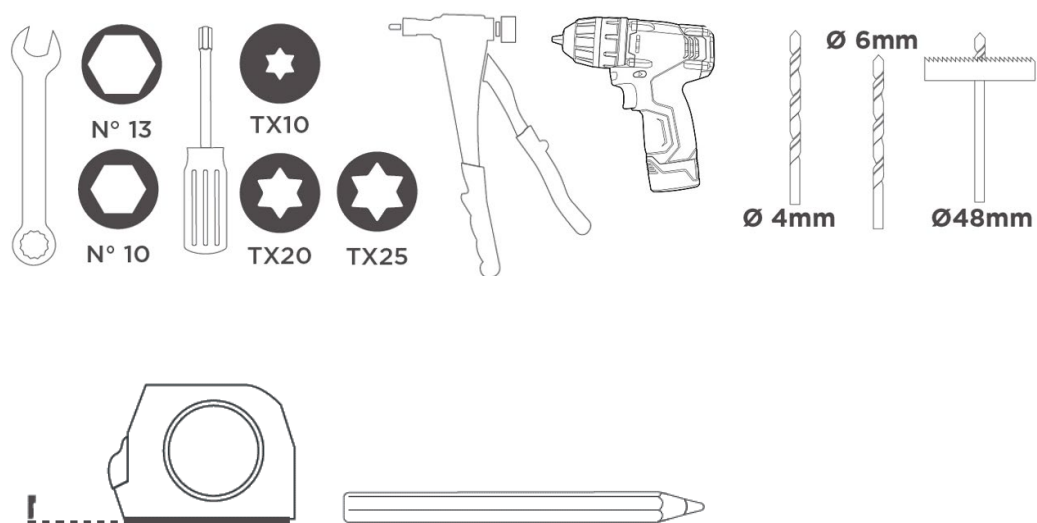


CONTENT&TOOLS

CONTENT



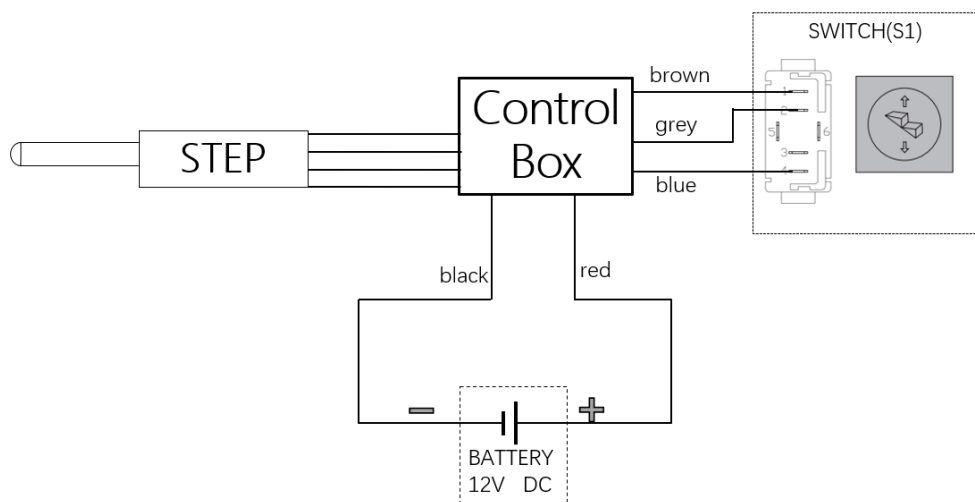
TOOLS



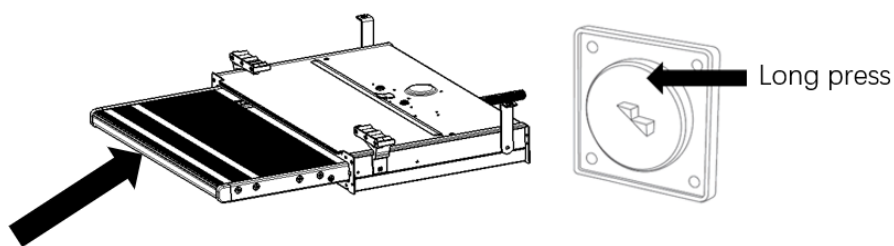
INSPECT

INSPECT -With controller version

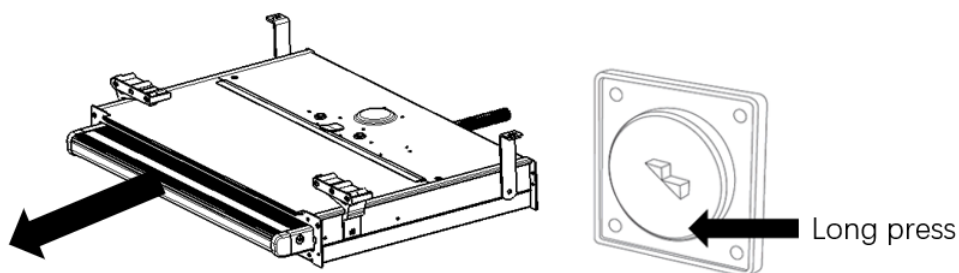
- Connect the circuit according to the wiring diagram
- Long press the extension switch to open the step and observe for any abnormal conditions
- Press and hold the retract switch to retract the steps, and observe for any abnormal conditions
- Attention: When powered on for the first time, if the step is not in the fully retracted position, please press and hold the retraction switch to retract the step and then extend and retract it, and observe if there are any abnormal conditions with the step



CLOSE



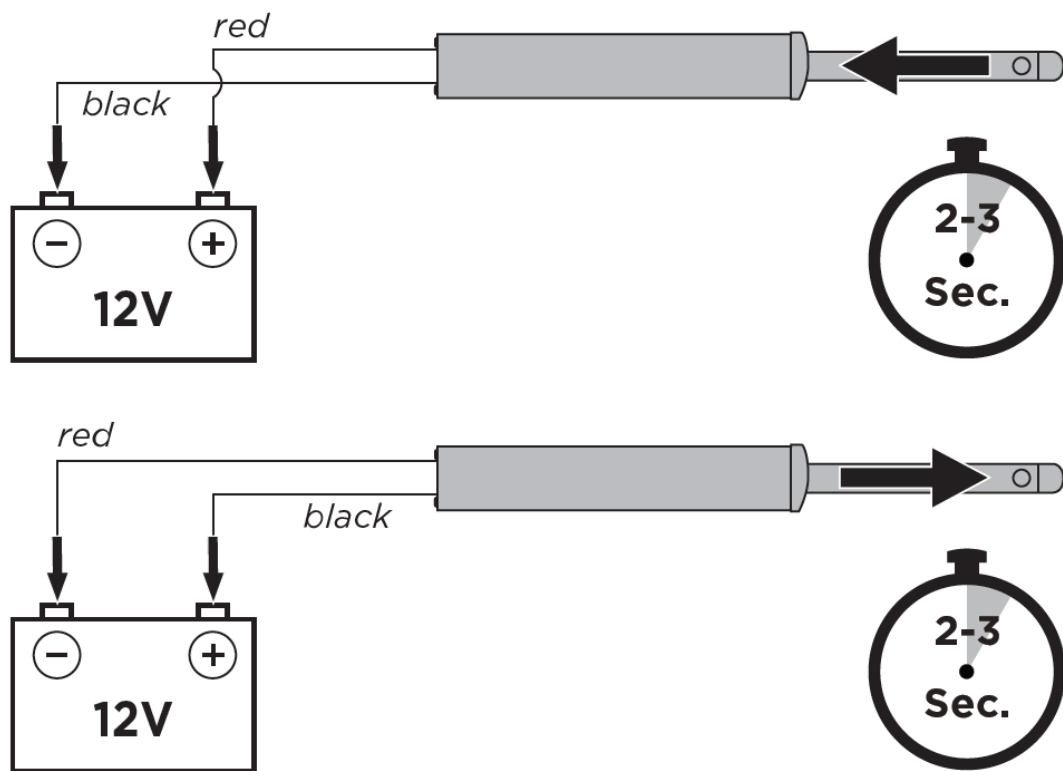
OPEN



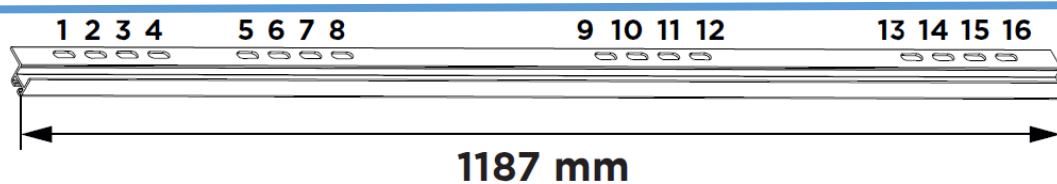
INSPECT

INSPECT -With controller version- No controller version

After connecting the positive and negative poles, power on for 2-3 seconds and observe if there are any abnormal situations when the steps extend and retract

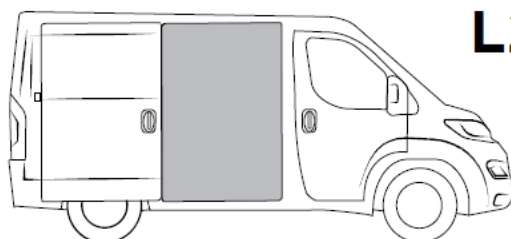


INSTALLATIONS

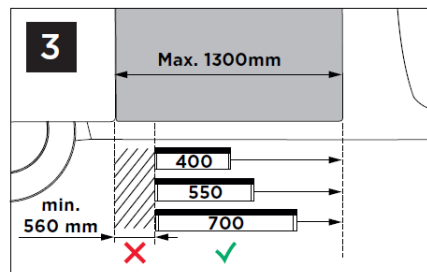
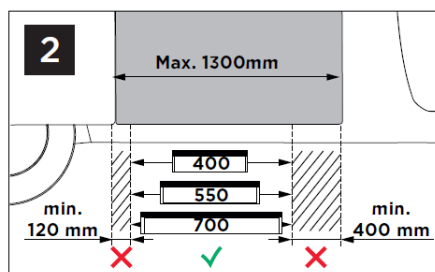
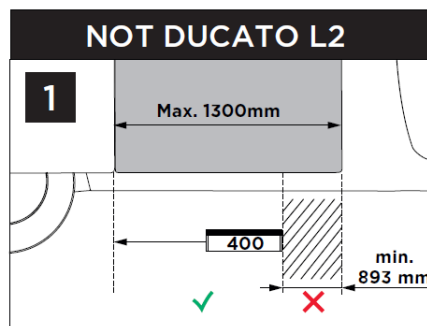
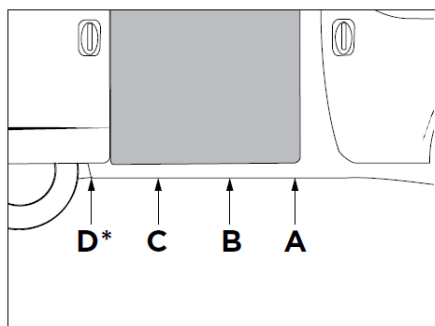


1	C&A	3&14 OR 4&15
2(DUCATO L3 & L4)	D*&B	1&13
2(DUCATO L2)	C&B	3&11

INFO

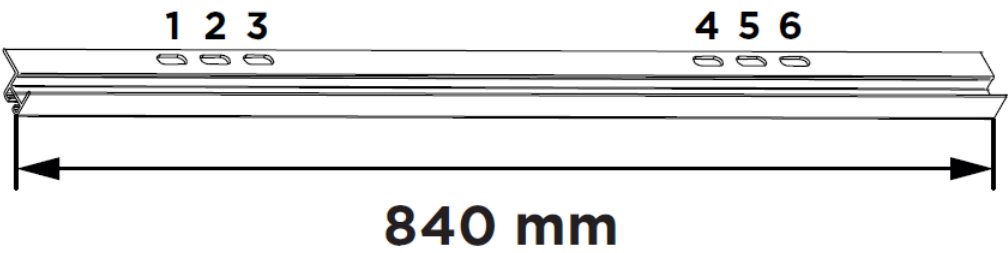


L2 / L3 / L4



INSTALLATIONS

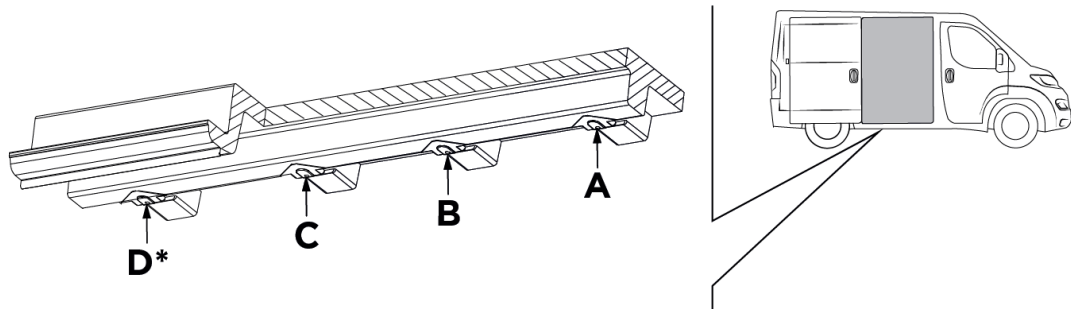
INFO



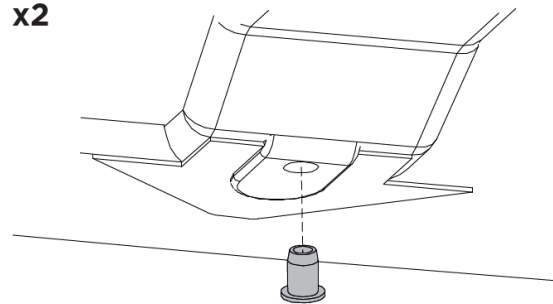
1	D * & C	1&5
2	B & C	3&5 OR 2&4
3	A & B	3&6 OR 2&5

INSTALLATIONS

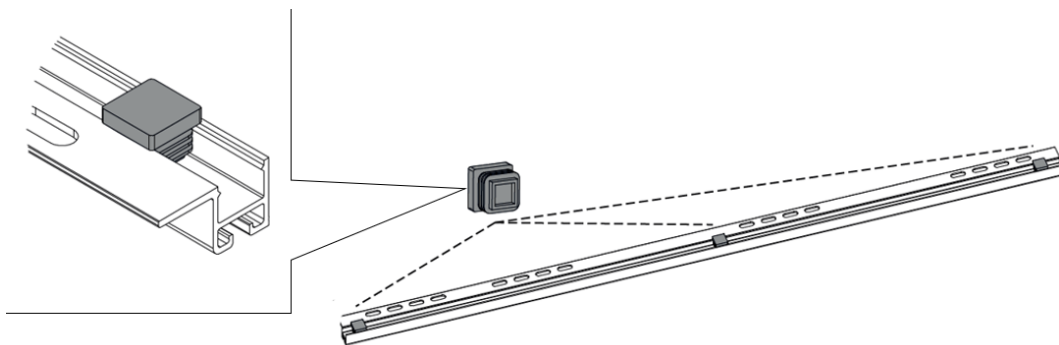
1



x2

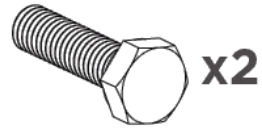


2

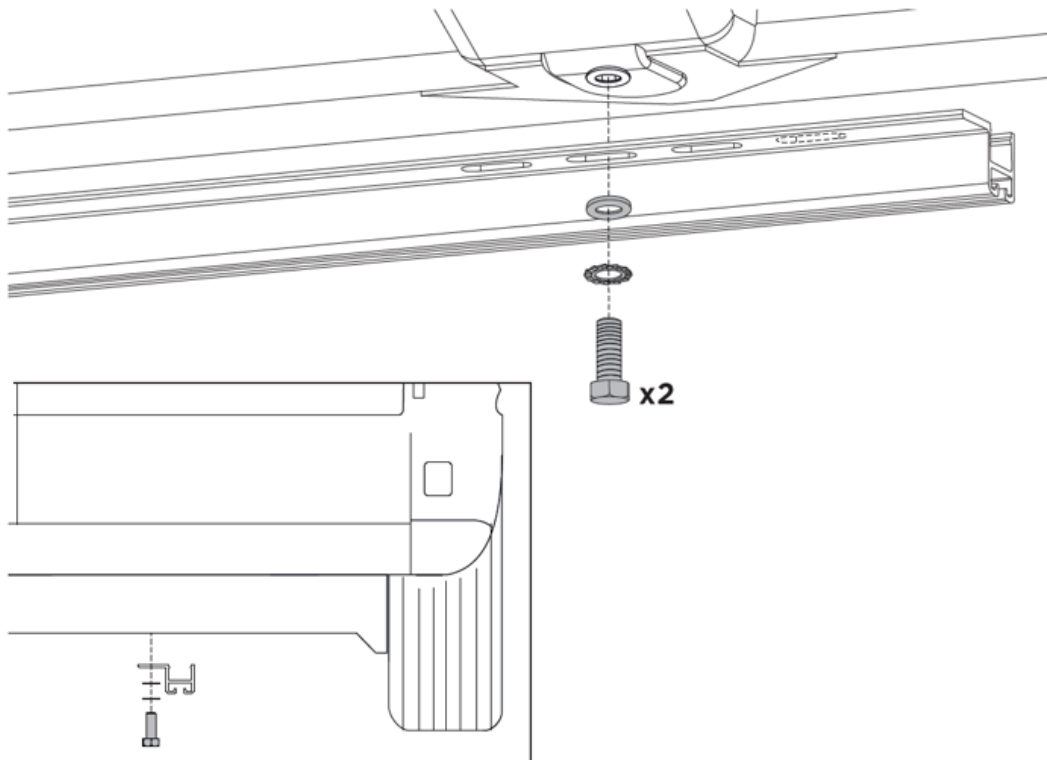


INSTALLATIONS

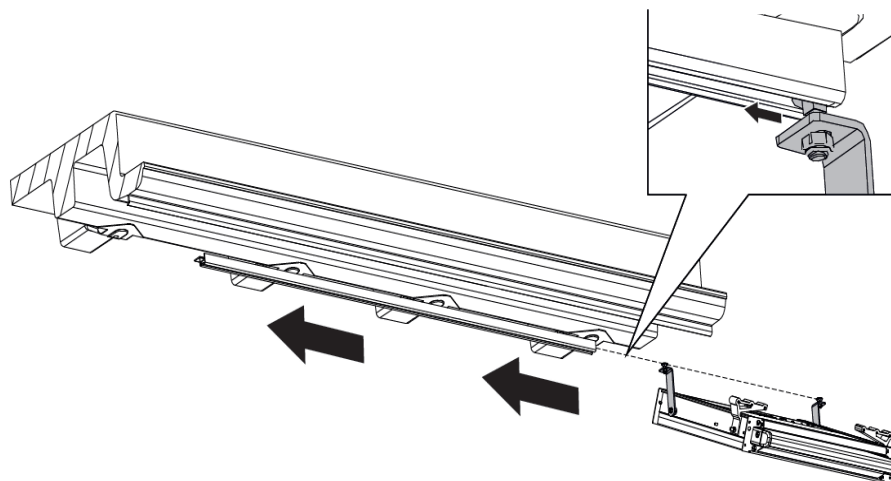
3



N° 13

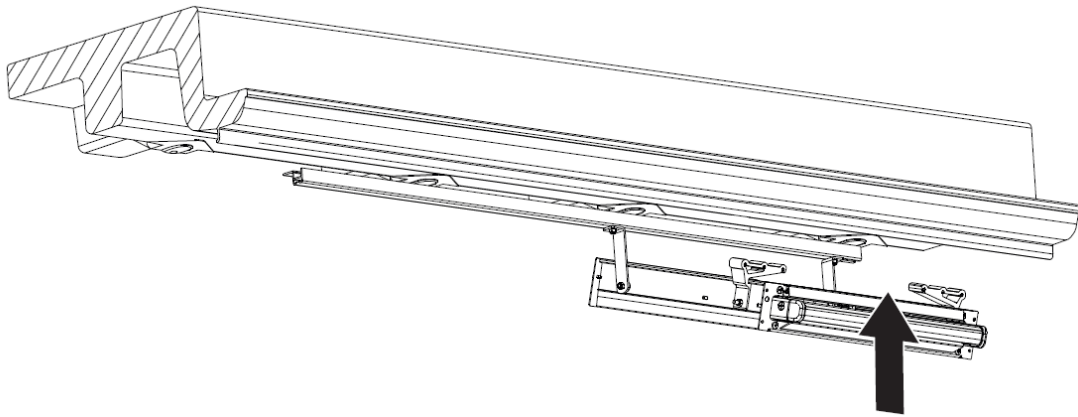


4

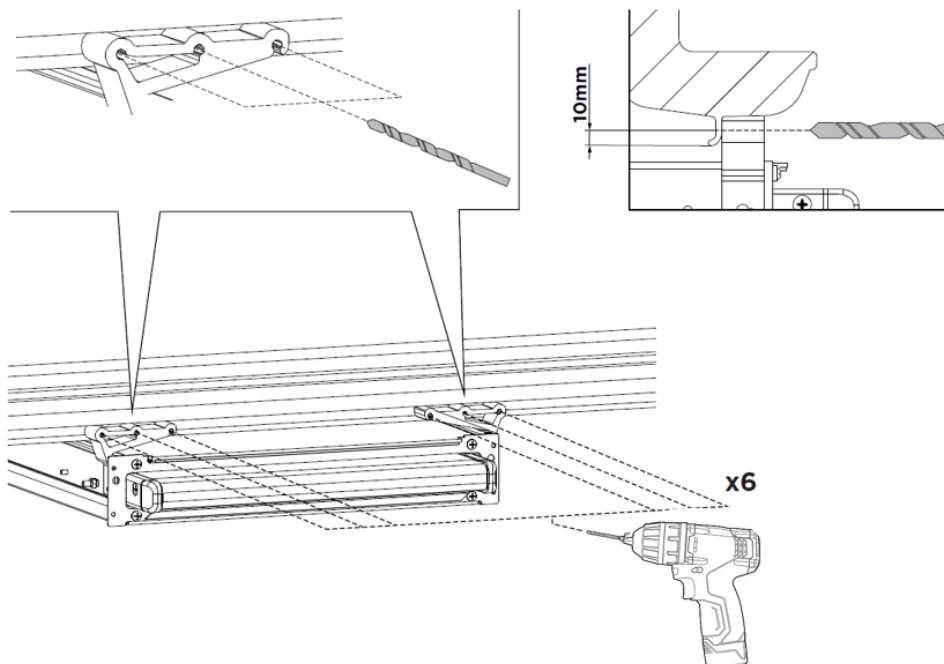


INSTALLATIONS

5

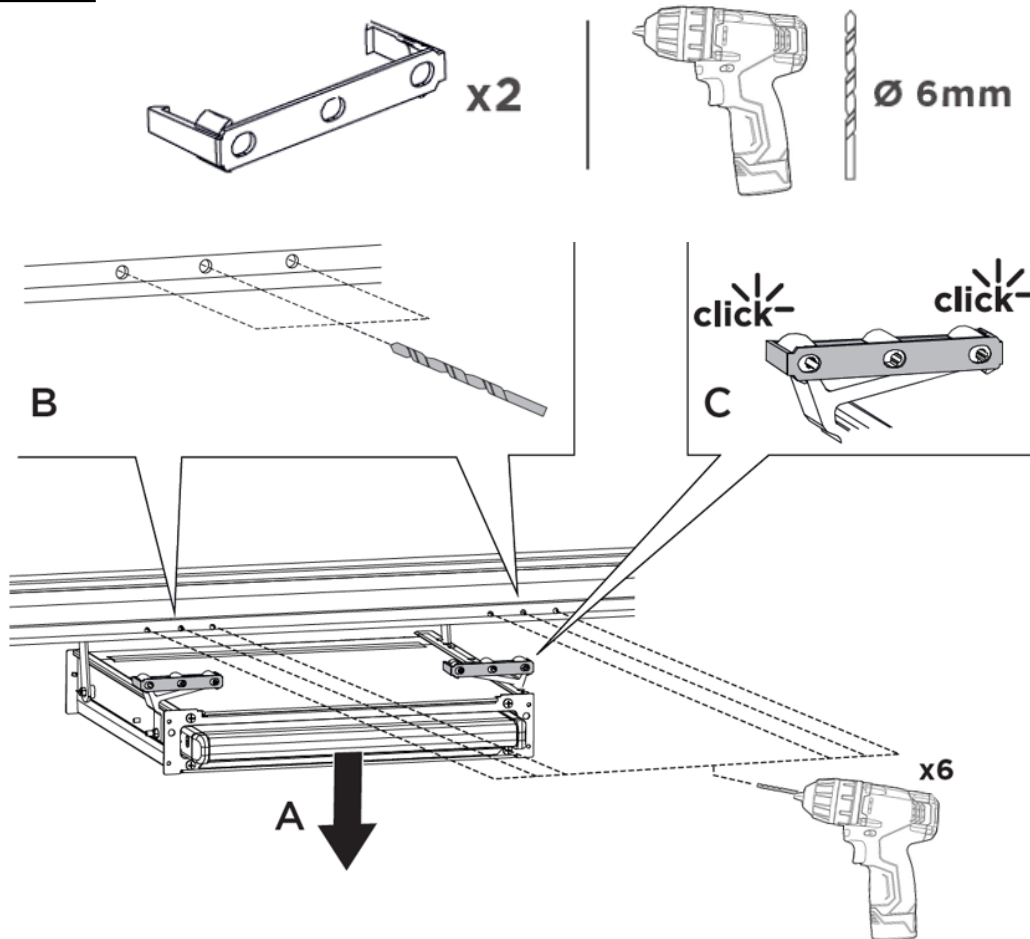


6

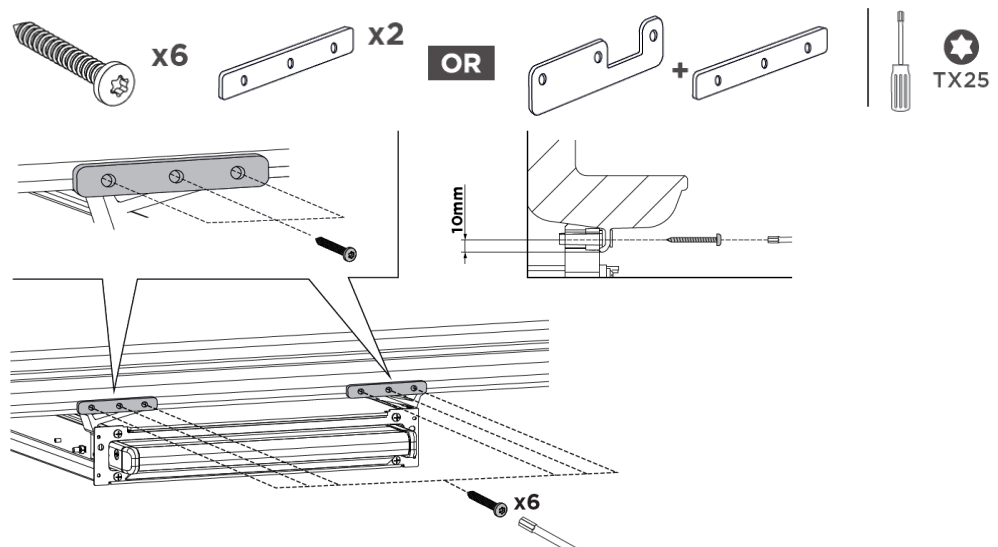


INSTALLATIONS

7

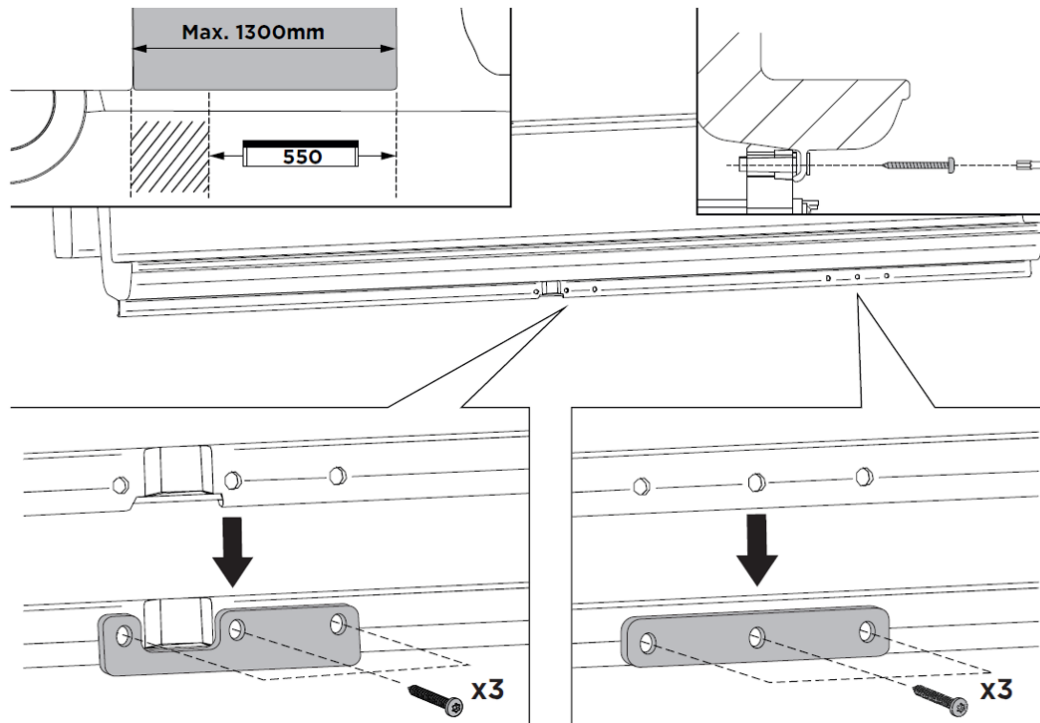


8

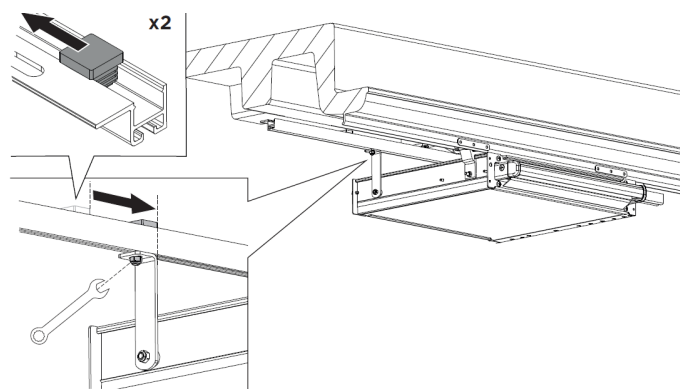


INSTALLATIONS

NOTE

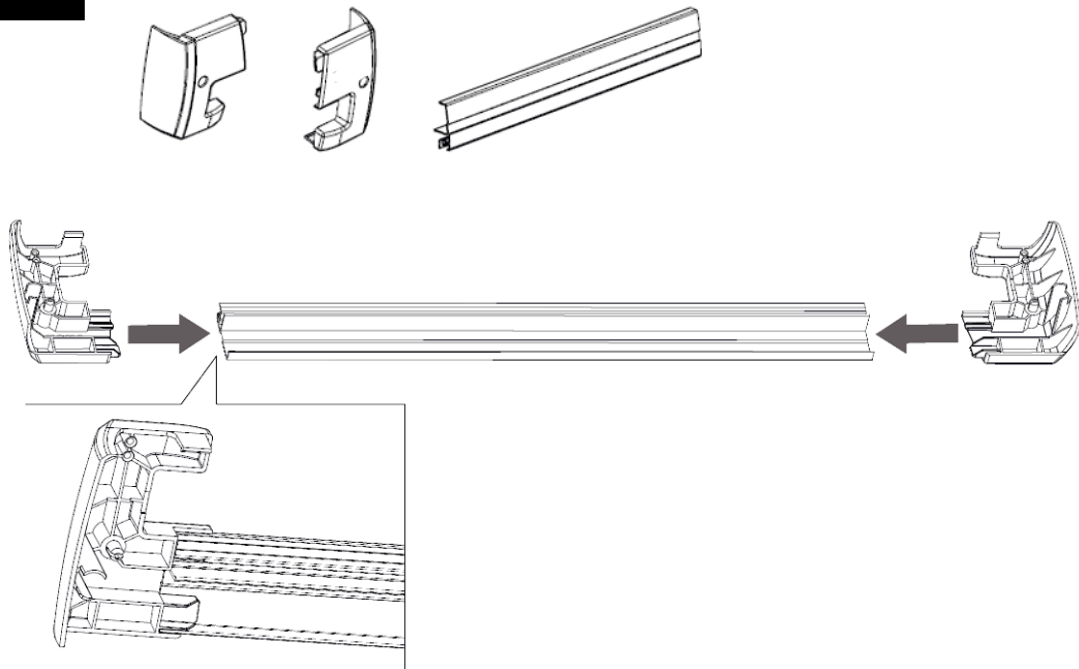


9

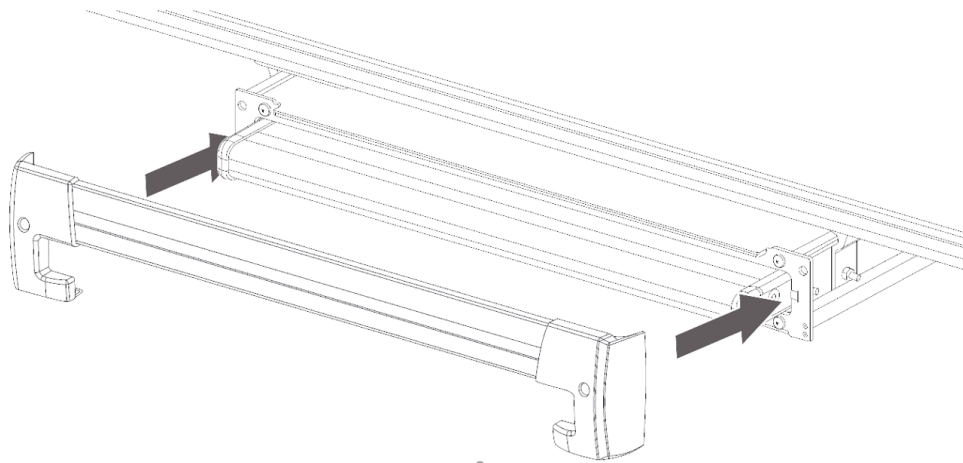


INSTALLATIONS

10



11



INSTALLATIONS

12



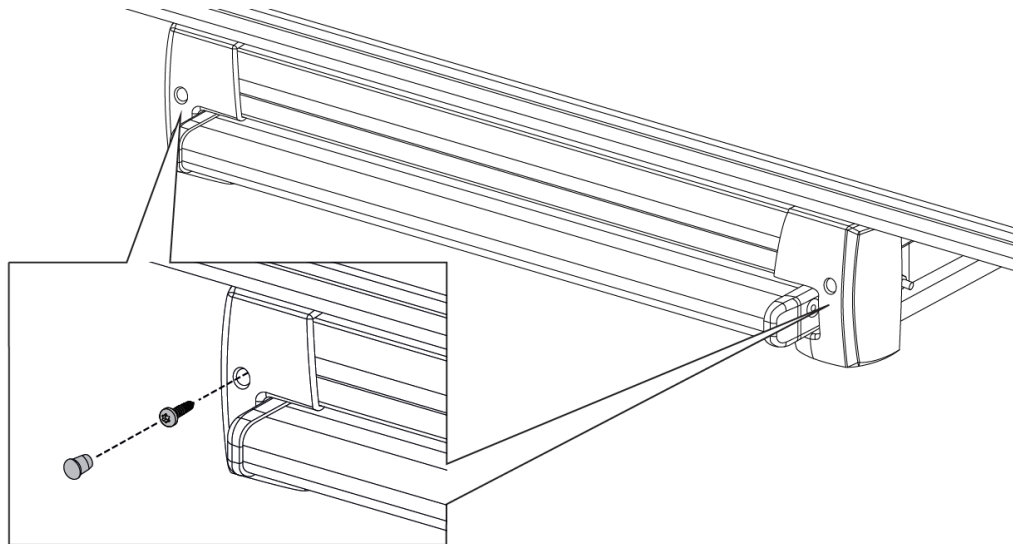
x2



x2

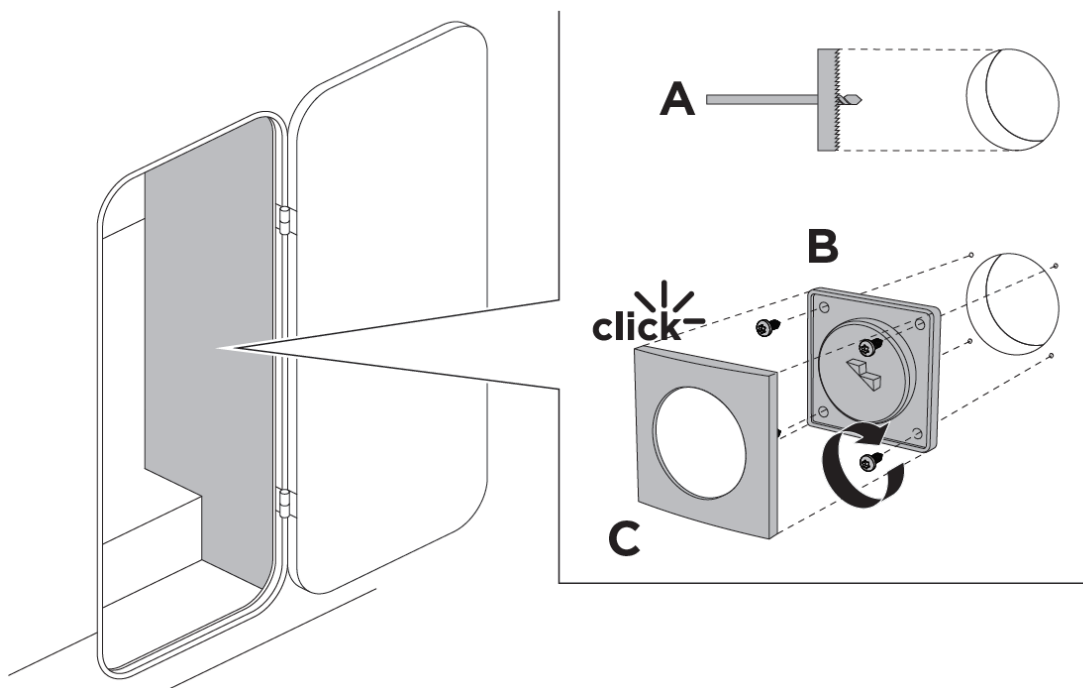
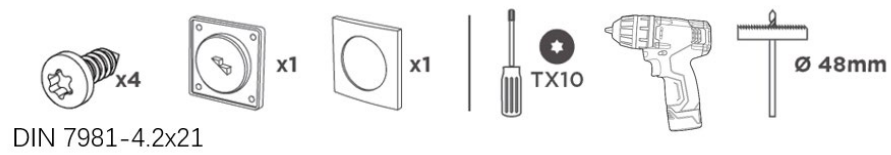


TX20

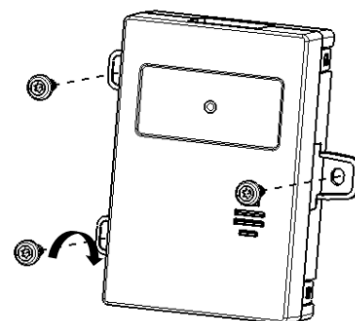


ELECTRICAL INSTALLATION

1

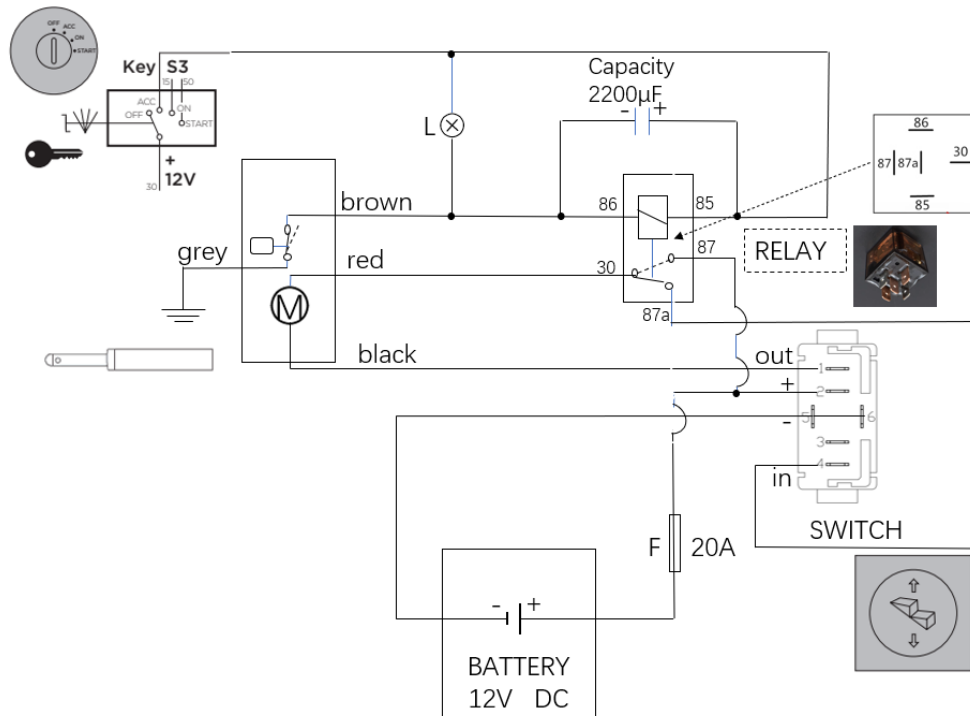


WIRING DIAGRAM- With controller version

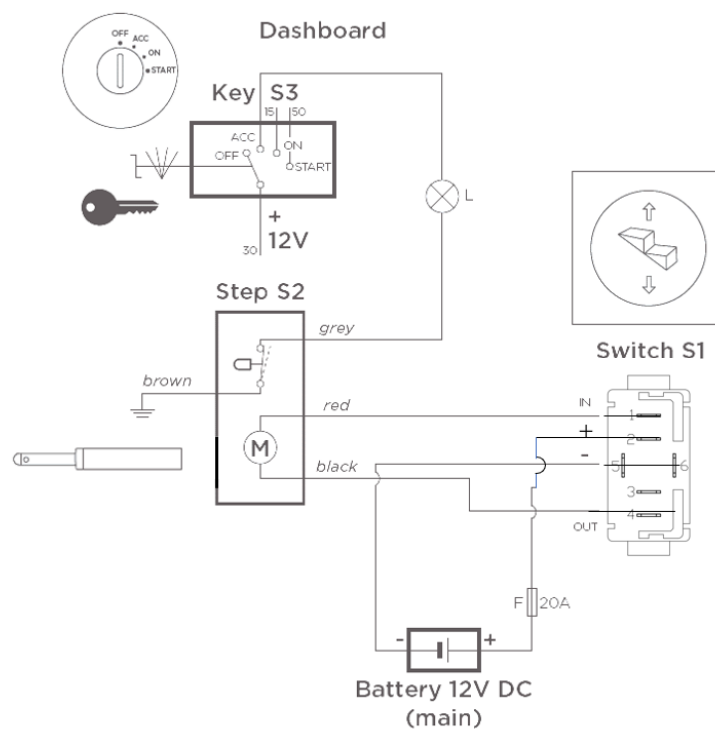


ELECTRICAL INSTALLATION

WIRING DIAGRAM- Automatically retract version without controller



WIRING DIAGRAM- Version without controller and warning light



INSTRUCTIONS

Read this installation instruction and the safety instructions in appendix thoroughly.

Follow the wiring diagram for all electrical installation!

1- Confirm the step status

Controller version

- The extension and retraction of the electric step are controlled by the controller. After receiving the step, operate it according to the following steps.
- Connect the gray, brown, and blue wires to switch (S1).
- Connect the red wire on the controller box to the negative terminal of the 12V DC power supply.
- Connect the black wire on the controller box to the negative terminal of the 12V DC power supply.
- For the first power on, if the step is not in the fully retracted position, please long press the retraction switch to retract the step. After retracting, hear a "beep" sound, long press the switch to extend and retract the step, and observe if there are any abnormal conditions

No controller version

- Connect the red wire harness to the positive pole of the 12V power supply and the black wire harness to the negative pole of the 12V power supply. Power on for 2-3 seconds and observe the extension and retraction of the steps

2- Necessary conditions (regulatory requirements)

in order to meet the EN 1646-1 (motor homes) and EN 1645-1 (caravans) requirements, the step should not be more than 400 mm from the ground and should be 300 mm at the most from the next step, when extended.

3- Installation

- Install the steps 1-12 according to the installation instructions
- Ensure that the installation is made so that there is no clamping danger (fingers, toes etc.) when the step is extended or retracted.
- Install the Thule Step in a dismountable way.

4- Install the operating switch (S1)

Install the switch near the door for easy access. Drill a 48 mm hole in the closet wall (most common).

Mount the switch with four screws and "click" the cover plate in place.

5- Electrical Installation

Controller version

- Connect the gray, brown, and blue wires to switch (S1).
 - Connect the red wire on the controller box to the positive terminal of the 12V DC power supply through the 20A fuse in the positive terminal wire of the battery. To prevent short circuits, do not insert fuses into the fuse holder until all electrical connections are complete.
 - Connect the black wire on the controller box to the negative pole of the 12V DC power supply.
-

INSTRUCTIONS

- Connect the black wire on the controller box to the negative pole of the 12V DC power supply.
- To meet EMC standard 2004/108/EC, connect the purple wire to the ACC switch to ensure that the steps are in the retracted state while driving
- Install the controller box in the appropriate position, insert the 20A fuse into the fuse box to complete the electrical installation, and prepare the steps.

No controller version

- Connect the circuit according to the schematic diagram, and be careful not to insert the fuse into the fuse holder until all electrical connections are completed.
- To meet EMC standard 2004/108/EC, connect the purple wire to the ACC switch to ensure that the steps are in the retracted state while driving
- After installation, insert the 20A fuse into the fuse box to complete the electrical installation, and the steps are ready.

6- Precautions

Controller version

When the step power is disconnected and reconnected:

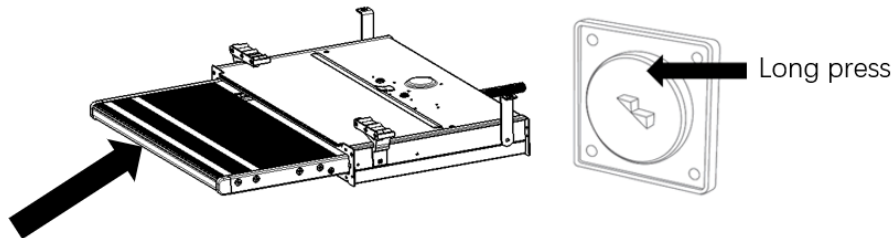
- When the step is fully retracted, it can be operated normally to extend.
- When the step is in the open state, the first operation after re powering on can only retract. When the step retracts to the last end to complete the initialization state, it can be operated normally to extend and retract the step. When the step extends and retracts, a "drip" sound will be emitted.
- When the engine is in ignition mode, the steps will automatically retract. Do not use the steps. If the step does not retract automatically, the buzzer will continue to sound an alarm. Please check the step status. If there is an electrical malfunction, the pedal can be removed: please refer to maintenance.

No controller version

When the operating step extends and retracts, press and hold for 2-3 seconds before releasing the switch to avoid prolonged stalling and damage to electrical components

CLOSE&OPEN

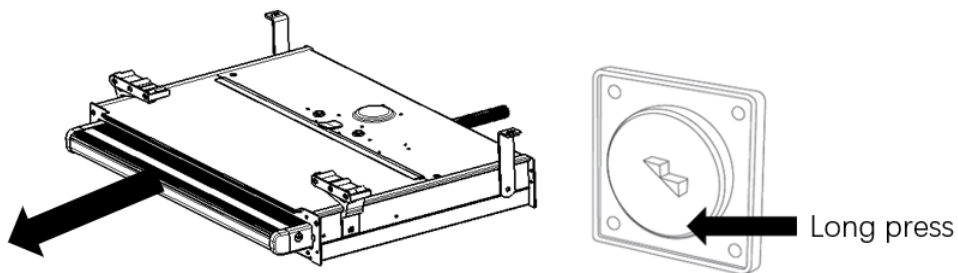
CLOSE



Without controller version: Long press for 2-3 seconds

With controller version: Long press until the buzzer beeps

OPEN

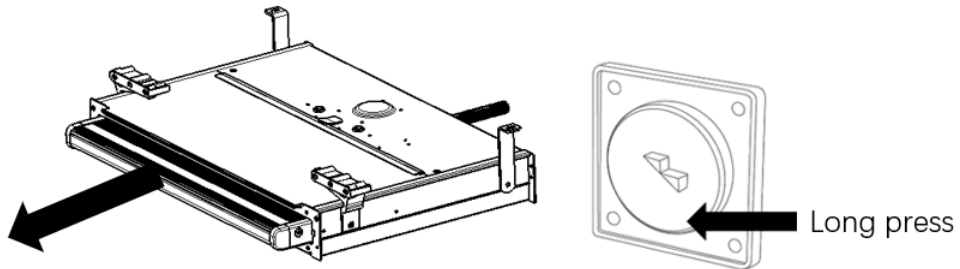


Without controller version: Long press for 2-3 seconds

With controller version: Long press until the buzzer beeps

MAINTENANCE

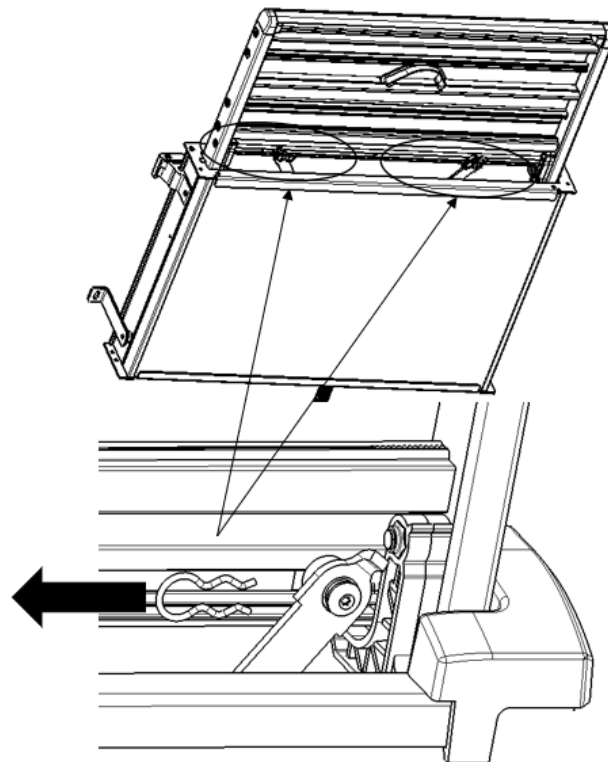
1



Without controller version: Long press for 2-3 seconds

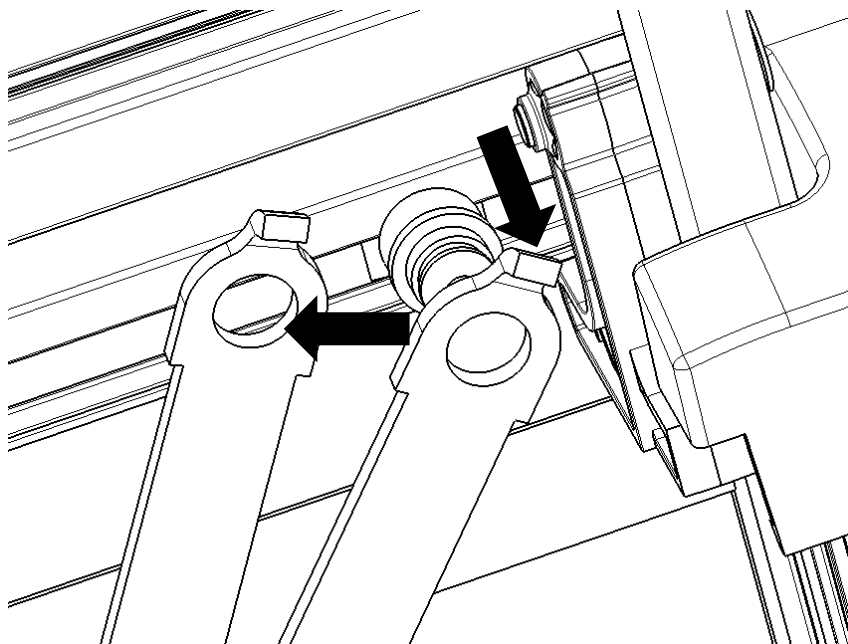
With controller version: Long press until the buzzer beeps

2

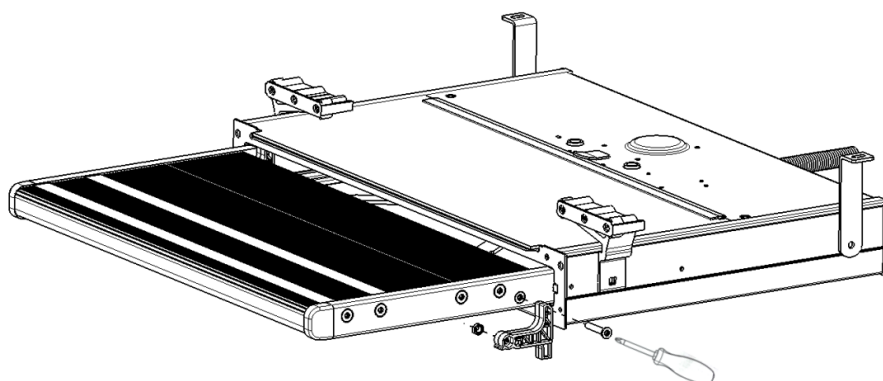


MAINTENANCE

3

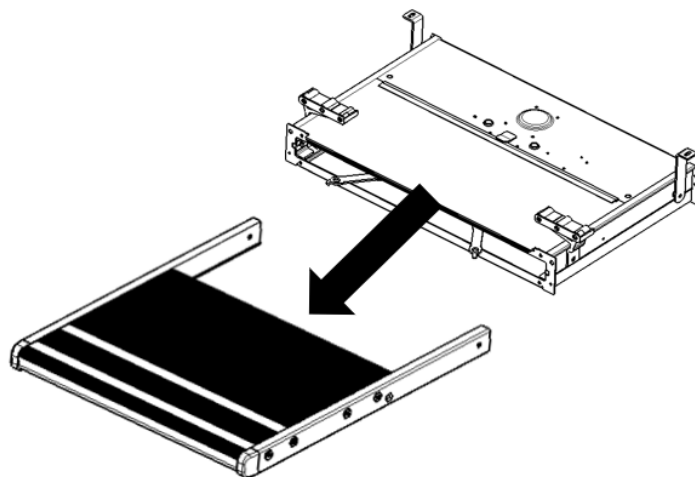


4

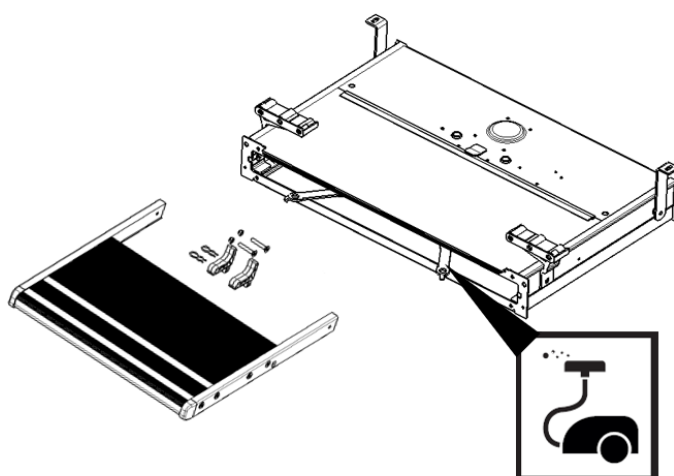


MAINTENANCE

5

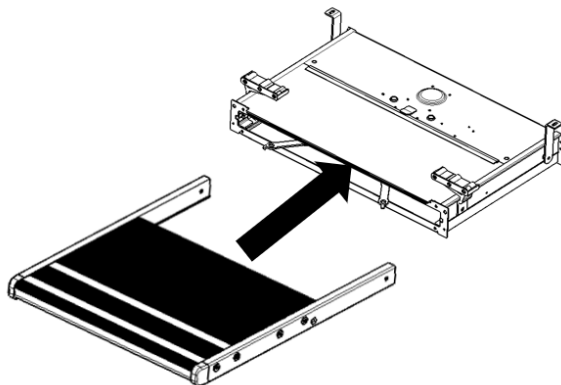


6

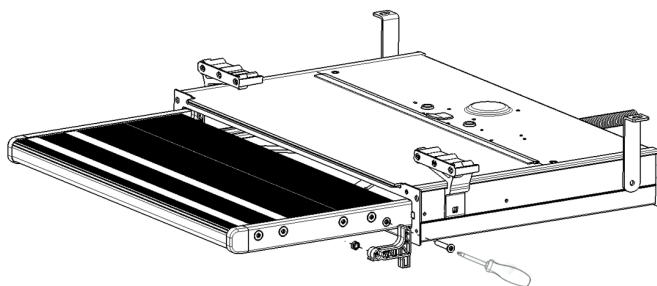


MAINTENANCE

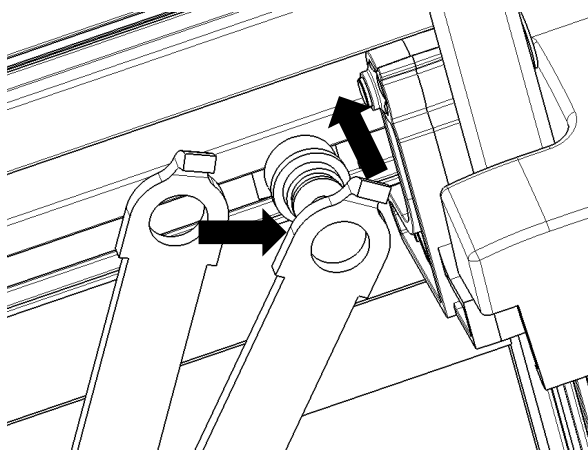
7



8

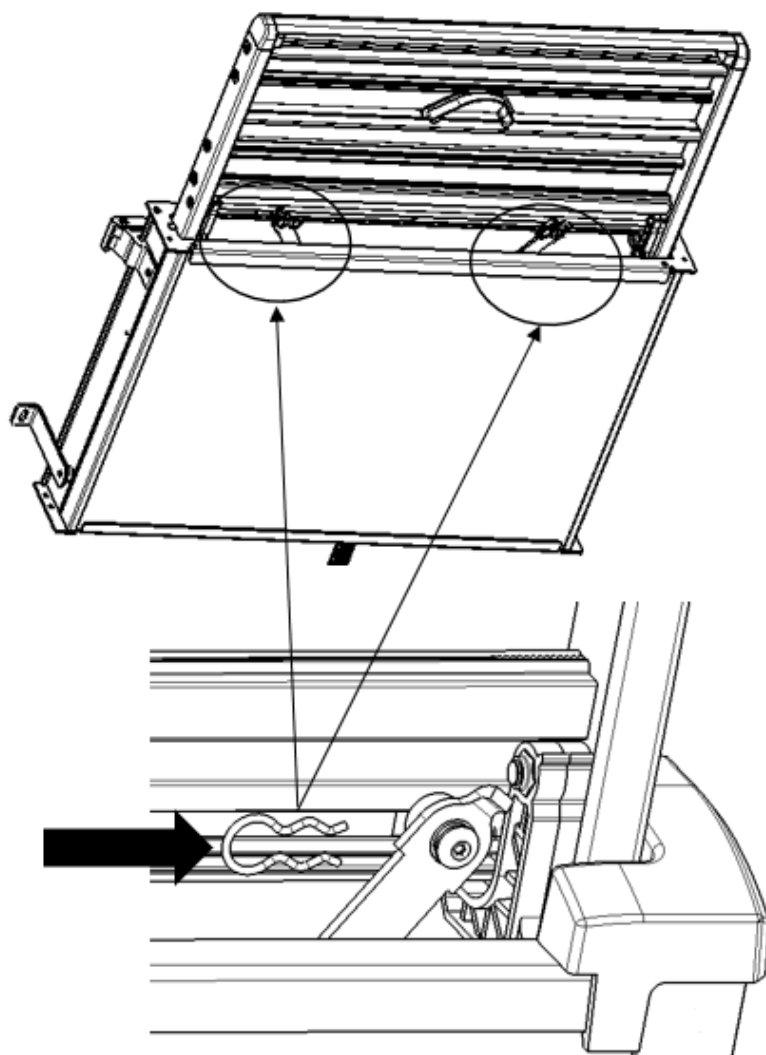


9



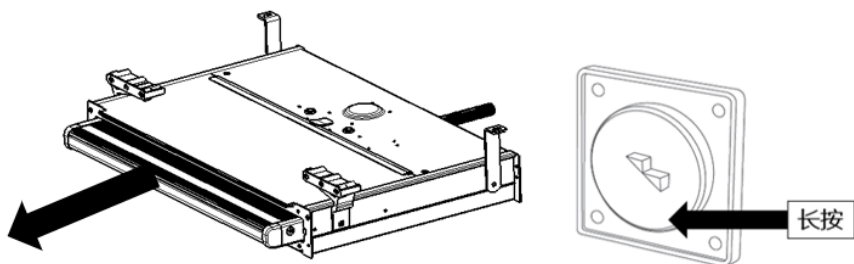
MAINTENANCE

10

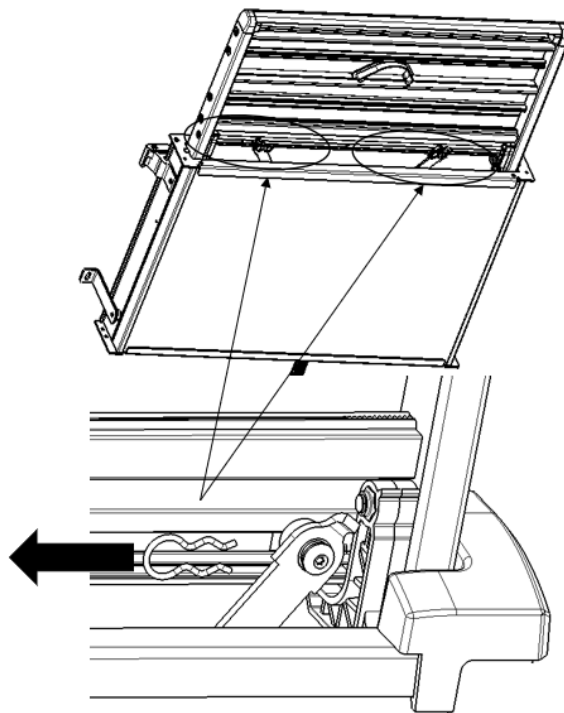


MANUAL MODE

1

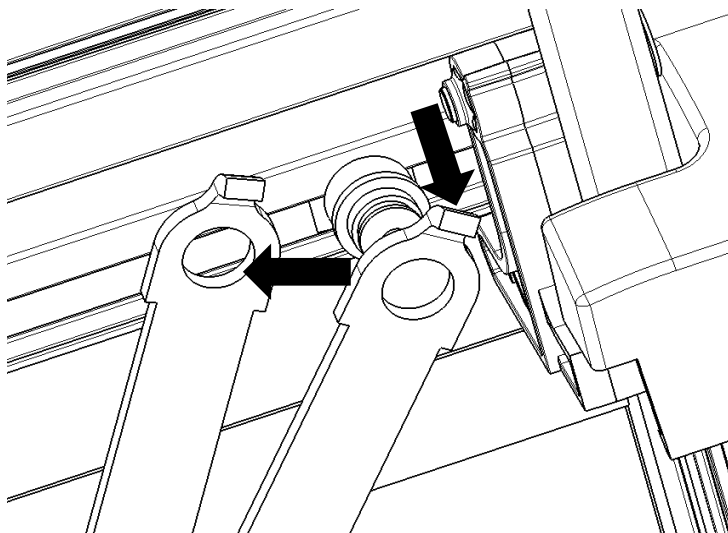


2

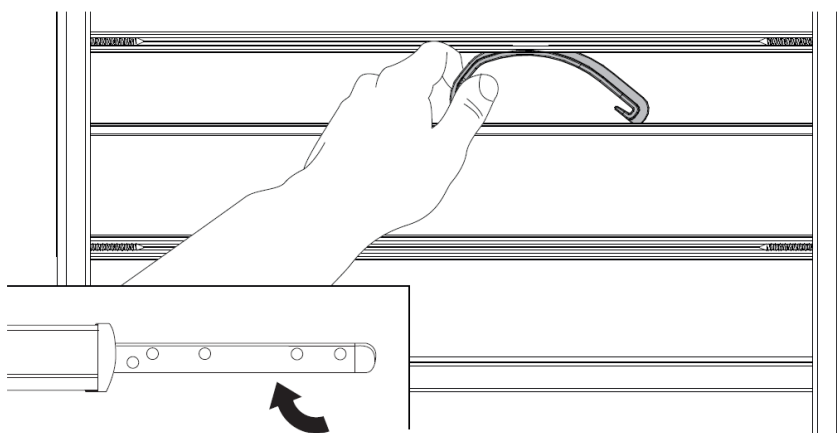


MANUAL MODE

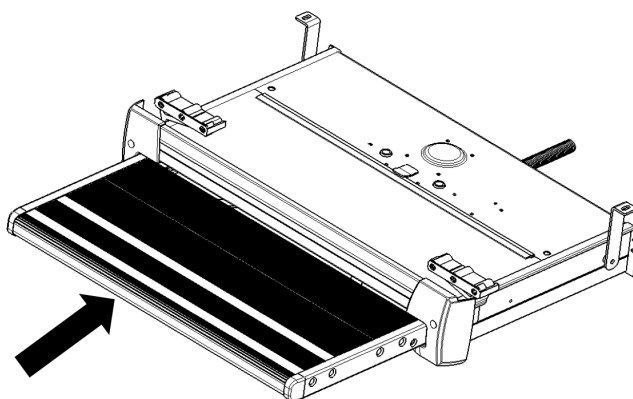
3



4

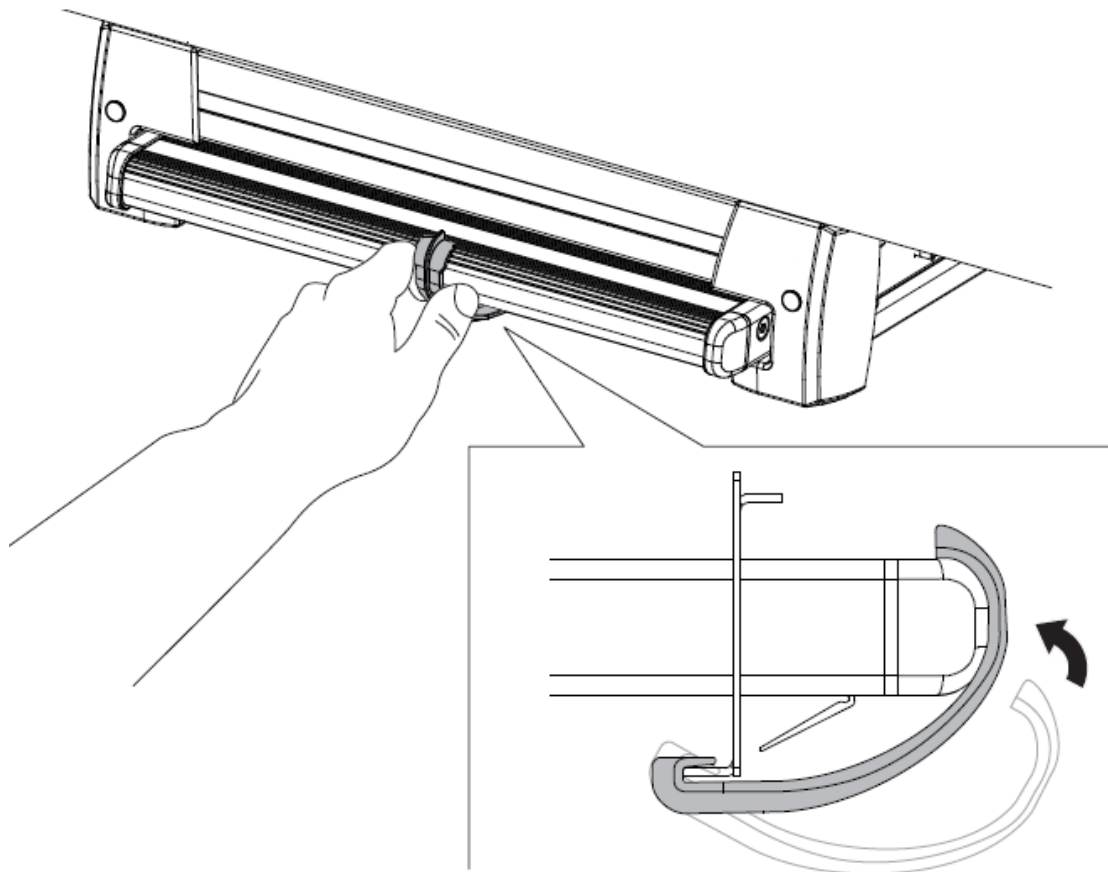


5



MANUAL MODE

6



INSTRUCTIONS

Read this installation instruction and the safety instructions in appendix thoroughly.

1- Operation

- The Thule Step is operated by the lever switch.
- Maximum static load is 200 kg.
- Note: Hold the switch until the step is fully extended.
- Do not use the step when retracting or not fully extending, otherwise the motor may be damaged.
- Always check that the step is fully retracted before departure!

2- Maintenance

Dirt and frost can prevent the Thule Step from operating properly. In this case the moving parts should be cleaned or defrosted. Keep the footboard clean and check the operation of the switch regularly.

It's possible to take out the footboard in order to clean the step inside.

- Extend the step to the fully extended position through the switch and disconnect the power supply of the step.
- Disconnect the 2 drive rods from the step panel by removing the clamp at the bottom of the step.
- Remove the outer screws and take down 2 black limit blocks.
- Take out the footboard and clean.
- Brush the inside of the step and remove the dirt with a vacuum cleaner. Never use a high pressure cleaner or water.
- Reconnect the transmission rod. Then install the limit block.

3- In case of electrical failure

If the step does not retract by motor: it's possible to take out the footboard: see maintenance.

Note: Never retract or extend the step by hand without this mechanical disconnection.

4- Current drawn

The operation process of the stepper motor is controlled by the controller, with a current between 1A and 4A

4- Note

Controller version

- After completing the cleaning and maintenance of the steps, it is necessary to perform initialization operations on the steps after re powering on. That is, after powering on, the steps need to be operated to fully retract. After initialization, the steps can be extended and retracted normally.
- When the engine is in ignition mode, the steps will automatically retract. Do not use the steps. If the step does not retract automatically and the buzzer is continuously sounding an alarm, please check the step status. If there is an electrical malfunction, the pedal can be removed: please refer to maintenance.

No controller version

- When the operating step extends and retracts, press and hold for 2-3 seconds before releasing the switch to avoid prolonged stalling and damage to electrical components
-

WARRANTY CARD

PRODUCT NAME: _____

PRODUCT MODE: _____

FACTORY NUMBER: _____

DATE OF PRODUCTION: _____

CUSTOMER NAME: _____ Contact Number: _____

CUSTOMER ADDRESS: _____

WARRANTY CONTENT: _____

AFTER SALES: _____

CUSTOMER SIGNATURE: _____ ☐ SATISFIED ☐ DISSATISFIED

WARRANTY CONTENT: _____

AFTER SALES: _____

CUSTOMER SIGNATURE: _____ ☐ SATISFIED ☐ DISSATISFIED

WARRANTY CONTENT: _____

AFTER SALES: _____

CUSTOMER SIGNATURE: _____ ☐ SATISFIED ☐ DISSATISFIED